

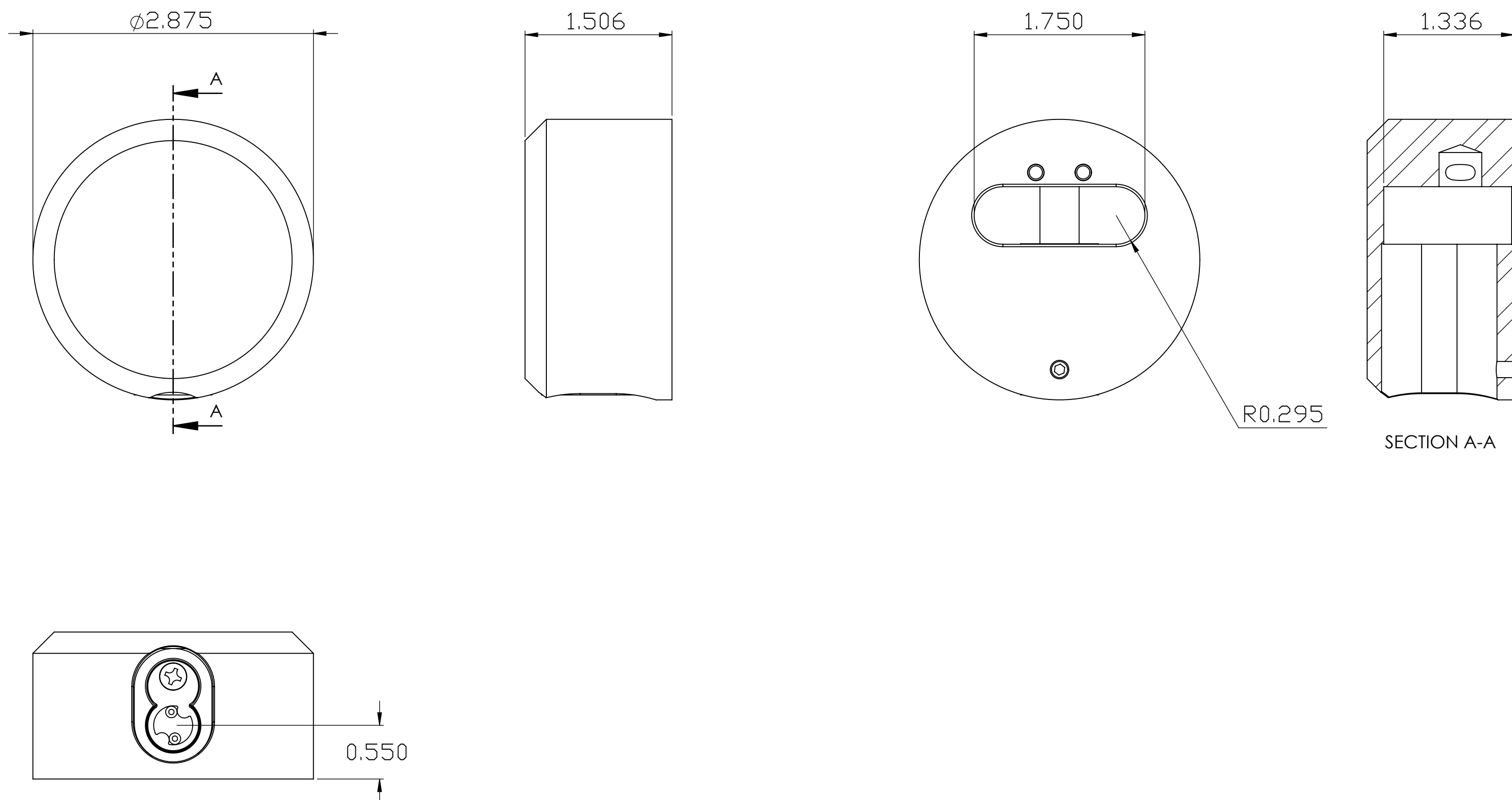
NOTES:

2170-IC2 STEEL SERIES

MATERIAL: CASE HARDENED SOLID STEEL PADLOCK BODY.  
 FINISH: ELECTROLESS NICKEL PLATED BODY, CHROME ELECTROPLATED SHACKLE.  
 CYLINDER: SMALL FORMAT INTERCHANGEABLE CORE (NOT INCLUDED)

2170A-IC2 ALUMINUM SERIES

MATERIAL: SOLID ALUMINUM PADLOCK BODY.  
 FINISH: ANODIZED BODY, CHROME ELECTROPLATED SHACKLE.  
 CYLINDER: SMALL FORMAT INTERCHANGEABLE CORE (NOT INCLUDED)



UNLESS OTHERWISE SPECIFIED: DIMENSIONS ARE IN INCHES TOLERANCES: 0 ±.020 .00 ±.010 .000 ±.003 ANGULAR: ±1 DEGREE	DRAWN	J. Fleagane	5/2/18	<b>PACIFIC LOCK COMPANY</b> 25605 Hercules Street, Valencia CA 91355 Tel: (888)562-5565 Fax: (661)294-3097
	ENG APPROVAL	J. Fleagane	5/2/18	
	MFG APPROVAL			
MATERIAL	SEE NOTE			TITLE:
FINISH	SEE NOTE			SIZE DWG. NO. REV
DO NOT SCALE DRAWING				C 2170-IC2 Tech Data Sheet
	SCALE: 2:1	WEIGHT:		SHEET 1 OF 1