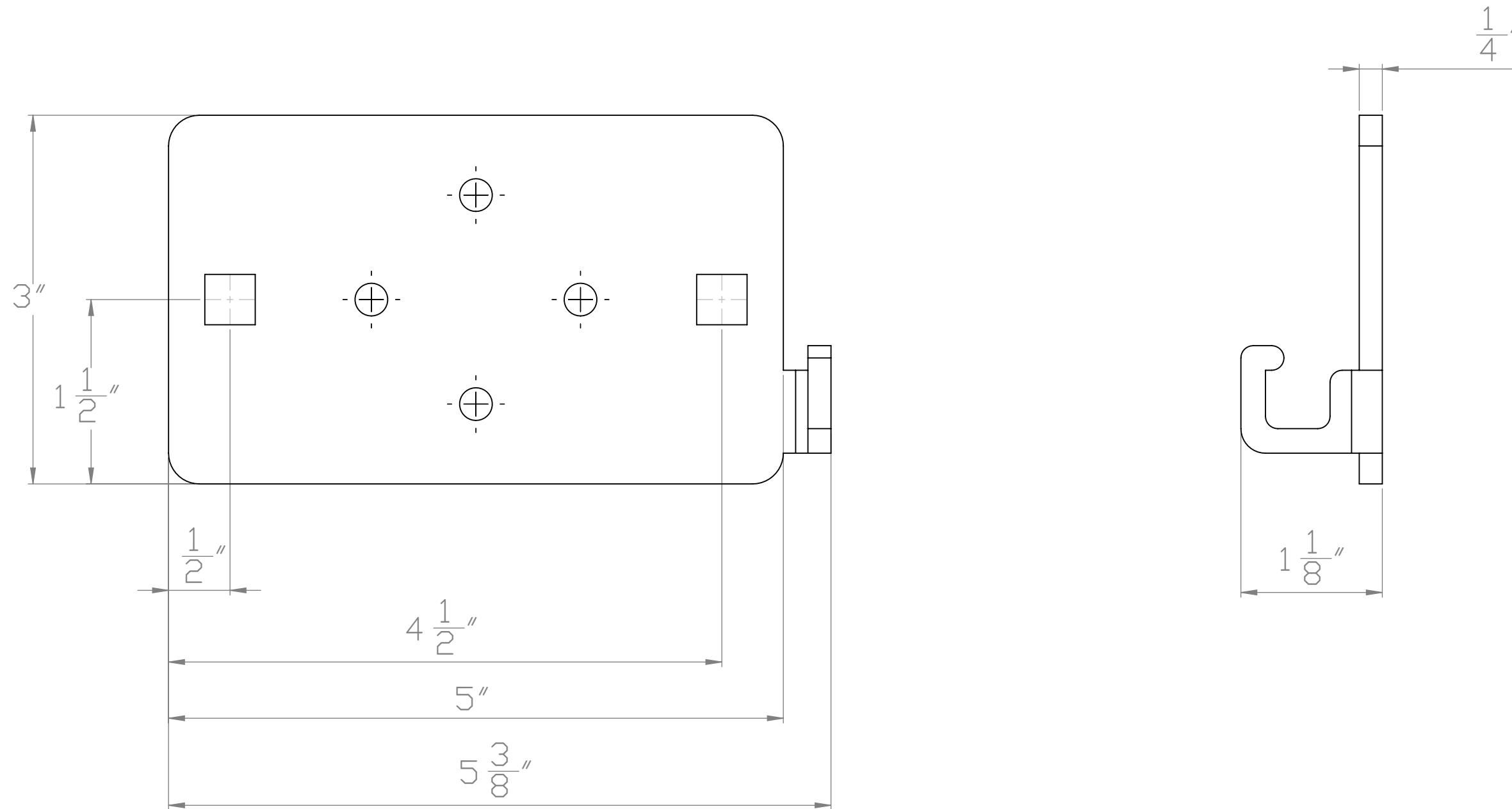


NOTES:

PUCK-LINK MOUNTING PLATE
 MATERIAL: COLD ROLLED STEEL
 FINISH: ZINC CHROMATE



UNLESS OTHERWISE SPECIFIED: DIMENSIONS ARE IN INCHES TOLERANCES: 0 ±.020 .00 ±.010 .000 ±.003 ANGULAR: ±1 DEGREE	DRAWN	J. Fleagane	9/25/17	PACIFIC LOCK COMPANY 25605 Hercules Street, Valencia CA 91355 Tel: (888)562-5565 Fax: (661)294-3097
	ENG APPROVAL	J. Fleagane	9/25/17	
	MFG APPROVAL			
	MATERIAL	Steel Plate		
FINISH	Zinc Chromate			SIZE DWG. NO. REV
DO NOT SCALE DRAWING				C PUCK-LINK Mounting Tech Data
	SCALE: 2:1	WEIGHT:		SHEET 1 OF 1